



Pioneer and specialist in composite timber products
the Widest range of composite decking & ceilings





Pioneer and specialist in composite timber products the
Widest range in composite decking & ceilings

MALAYSIA BRUNEI BAHRAIN SINGAPORE VIETNAM INDONESIA GERMANY ITALY FRANCE UKRAINE INDIA PHILIPPINES

About us

Since year 2004, our Group has been actively operating with a global vision in mind - to expand our business beyond the domestic Malaysian market. Our efforts paid off with us becoming a source of wood-alternative product supplier to a number foreign countries such as Singapore, Indonesia, Philippines, Vietnam, France, Italy, Germany, Netherlands, India, Australia and New Zealand to name a few.

The awareness for Environmental Protection has been a push factor for the driven need for Greener products in recent years, and it is expected to grow even further in times to come. This has been a thing that we care about, and had always wanted to be a part of, and it is no other that this particular reason, we make Easy Wood's product environmentally friendly and **Green Label certified** composed of more than 50% recycled contents.

But going green isn't all for us. We had taken a few steps further to make our products a better alternative to natural wood; with benefits and features **like termite resistance, water resistance, easy maintenance, and a pre-finished surface** that carries aesthetics the same way a natural wood does - less the need for painting or varnishing, as well as resistances to fungal, algae or mould growth Easy Wood products will be your perfect material of choice for all your indoor or outdoor applications needs.

Easy Wood covers a wide range of composite products ranging from T&G ceiling strips to wall cladding, deck boards, deck tiles, battens, edging boards, skirtings, cornice, architrave, furniture lining and etc. And to top it off, we have OEM Services available on request too!

We've been operating for more than 10 years... Through our years of continual development, **Easy Wood now has the widest range of composite decking and ceilings products** to meet all our customer's requirement, we offer more than just choices but a series of customizable solutions!

Tested & Certified,



Contact us

EASY WOOD SDN. BHD.

Selangor - No. 4, Jalan BP 5/8, Bandar Bukit Puchong, 47100 Puchong, Selangor. Tel : +603 8060 0392 / 0352 Fax : +603 8060 0243

EASY WOOD (PENANG) SDN. BHD.

Penang - No. 31, Lorong Perda Timur 2, Bandar Perda, 14000 Bukit Mertajam, Sebarang Prai Tengah, Penang. Tel : +604 530 3052
Fax : +604 530 3061

EASY WOOD (JOHOR) SDN. BHD.

Johor - 14A, Jalan Padi 1, Bandar Baru Uda, 81200 Johor Bahru, Johor. Tel 014 2754 700 / 014 6183 988

Email : info@easywood.com.my

Web site : www.easywood.com.my



EAZY Wood Composite Decking

easy maintenance pre-finished surface with timber look
termite & water resistant (manufacturer warranty)

Typical Components of EAZYWOOD WPC Decking System



Component	Detailed dimensions (mm)	Remarks / Basic Installation Guideline**
WPC Deck board	125(w) X 25 (thk.) X 3,050 (L) 138(w) X 22.5 (thk.) X 2,800 (L) 140(w) X 24 (thk.) X 2,800 (L) 150 (w) X 25 (thk.) X 2,800 (L)	Installed with expansion gaps (5~ 10 mm)
HDPE-WPC Solid Batten	40 (w) X 25 (thk.) X 3,050 (L)	Running @ 250 mm c/c (max.). Optional battens material, i.e. grade A hard wood, gal. steel, aluminium, s/steel e.t.c.
Edging board	95 (w) X 10 (thk.) X 3,050 (L) or 63 (w) X 10 (thk.) X 2,800 (L)	Tighten with stainless steel tapping screws directly on panel surface every 300.00 mm span at max, with silicone bonding adhesive applied between back of panel with contact surface. (Bonding adhesives for outdoor use.)
WPC L-angle	25 X 25 X 3,050 (L)	Installed with "direct screwed method" on @ every 300 mm (max) plus bonding silicon adhesive (external use type).
SS 304 screws	# 8 X 25 mm (for metal h/sections) # 8 X 30 mm (for WPC or wood) # 10 x 63 mm (to install battens)	Custom screws with head coated in brown to minimize glare when installed on deck board, wood or steel batten.
Fastener clip	As per samples	Made with / from durable nylon material.

**Remarks / Basic installation Guideline – above stated are only applicable for installations at normal site condition, do contact us if need further advise.

A Customized Edging Design

We are committed to providing customized edging solution for you to meet all your design requirement, perfecting your work is our mission.



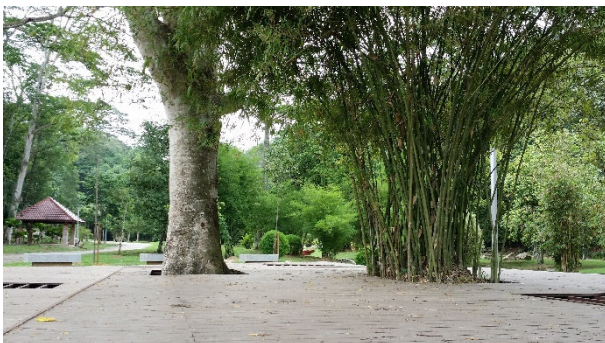
EAZY Wood Composite Decking

EAZY Wood composite decking with it's features & benefits of termite & water resistance, easy installation & maintenance, environmental friendly & aesthetically so close to real timber suggesting it's the ideal product for the out-door decking various applications..

EAZY Wood composite decking with widest ranges of decking choices in terms of budgetary prices, colour finishes & sizes, in order to meet the customers needs.



Balcony decking @ show unit for a semi-D development, Penang.



Landscape decking @ Lembah Kiara Recreation Park TTDI, Selangor..



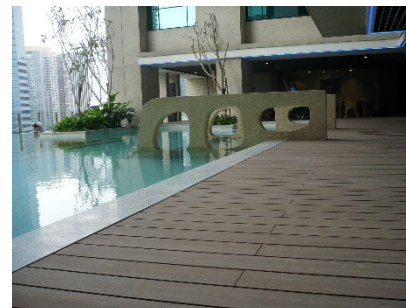
Seaside / pool decking @ Langkawi Lagoon / Resort Hotel, Langkawi Island.



Garden decking for private bungalow residence @ Bukit Damansara, Kuala Lumpur.



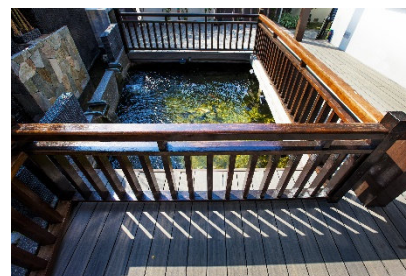
Food & beverage out-lets decking @ Mid-Valley Megamall.



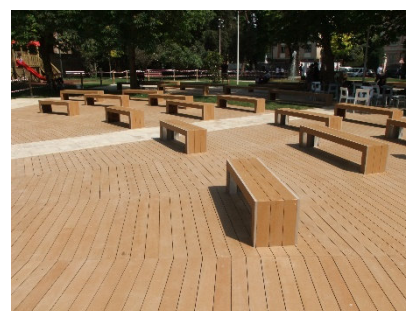
Swimming pool decking @ G-Tower Hotel, Kuala Lumpur.



Lounge decking @ E&O Hotel, Penang.

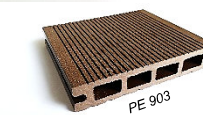


Fish pond decking @ private bungalow residence, Penang.



Open Theatre decking @ Italy.

Widest range of WPC decking



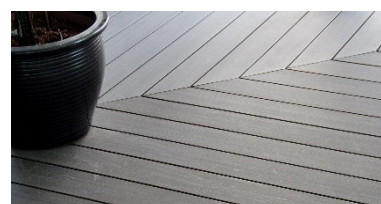


EAZY Wood Composite Decking

easy maintenance pre-finished surface with timber look
termite & water resistant (manufacturer warranty)

EAZY Wood composite decking with widest ranges of decking choices in terms of budgetary prices, colour finishes & sizes, in order to meet the customers needs.

	Product Code (colour)	Technology	Basic Detail							Performance rating					Material Warranty **(years)
			Type				Detailed Dimensions (~mm)			Water resistant	Termite resistant	UV resistant (against colour fading)	Aesthetically natural grain surface	Suitability usage	
			PVC-WPC	PE-WPC	Hollow	Solid	width	thk.	Length						
Deck Board	P 800 (dark walnut)	Co-Ex (Gen 2)	√		√		125	25	3,050.00	very good	very good	good	medium	residential	10
	P 801 (rose wood)	Co-Ex (Gen 2)	√		√		125	25	3,050.00	very good	very good	good	good	residential	10
	P 803 (drift wood)	Co-Ex (Gen 2)	√		√		125	25	3,050.00	very good	very good	good	good	residential	10
	P 804 (burmese teak)	Co-Ex (Gen 2)	√		√		125	25	3,050.00	very good	very good	good	good	residential	10
	P 805 (light walnut)	Gen 1		√	√		125	25	3,050.00	very good	very good	medium	medium	residential	10
	PESO 902 (merbau)	Gen 1		√		√	140	24	2,800.00	very good	very good	good	N/A	commercial	5
	PE 903 (merbau)	Gen 1		√	√		150	25	2,800.00	very good	very good	good	N/A	residential	5
	PESODL 101 (lpe)	Co-Ex (Gen 2)		√		√	138	22.5	2,800.00	very good	very good	very good	good	commercial	10
	PESODL 102 (walnut)	Co-Ex (Gen 2)		√		√	138	22.5	2,800.00	very good	very good	very good	good	commercial	10
Batten															
	Batten 2540			√		√	40	25	3,050.00	very good	very good	NA	NA	accessories	5
Edging															
	PF 9510		√			√	95	10	3,050.00	very good	very good	medium	medium	accessories	10
	PF 6310			√		√	63	10	2,800.00	very good	very good	very good	very good	accessories	10
	L-angle		√			√	25x25	5	3,050.00	very good	very good	medium	medium	accessories	10
	Fastener clip (nylon)		(as per sample, gap ~ 5-6 mm)							very good	very good	NA	NA	accessories	10
	Fastener clip (SS 304)		(as per sample, gap ~ 2-3 mm)							very good	very good	NA	NA	accessories	10



Material Properties

(PE-WPC Deck Board Code : PESODL 101, PESODL 102)



*Detailed dimensions - 138 (W) X 22.5** (Thk.) X 2,800 (L) mm*

***The thickness subject to +/- 0.30 mm tolerances due to sanding process on it's surface.*

Property	Result	Test Method	Remark
Specific Gravity	1.32 g/cm ³	KS F 3230 : 2013	
MOE- High Temperature	2,752 MPa	ASTM D7032	52 Celsius
MOE- Low Temperature	5,464 MPa	ASTM D7032	- 29 Celsius
MOR- High Temperature	21.8 MPa	ASTM D7032	52 Celsius
MOR- Low Temperature	38.4 MPa	ASTM D7032	- 29 Celsius
Hardness	78.7 R	ASTM D785	
Slip Resistance	R 11	DIN 51130	
Impact Resistance-Low Temperature	Pass	KS F 3230 : 2013	
Impact Resistance-Ambient Temperature	Pass	KS F 3230 : 2013	
Impact Strength	4.9 kj/m ²	KS F 3230 : 2013	
Thermal Conductivity	0.2 W/m*K	EN 14041 : 2004	
Stair Tread Load	Pass	AC 174	
Creep Recovery	92%	ASTM D7032	
Fastener Withdrawal	1.12 kN	ASTM D7032	
Freeze-Thaw	over 40 cycles		Internal
Fungus Decay Resistance	Rating 0	ASTM G21	
Temperature Effect	1.32 g/cm ³		Internal
Abrasion Resistance	Index 33	ASTM D4060	
Coefficient Of Linear Thermal Expansion	36.3 um/m*C	ASTM D696	
Flame Spread Index (FSI)	85	ASTM E84	
Smoke Density Index (SDI)	300	ASTM E84	
Staining Resistance	Resist most liquids		Internal
Scratch Resistance	20 N		Internal
Moisture	0.8%	KS F 3230 : 2013	
Formaldehyde	Non detectable	EN 717	
Coefficient of Friction	0.5	KS F 3230 : 2013	
QUV 3000 Hours Colour Retention	< Delta E of 4	ASTM G154-12	
RoHS	Non detectable	RoHS Directive 2002/95/EC	Cadmium
	17 mg/kg	KS F 3230 : 2013	Lead
	Non detectable	KS F 3230 : 2013	Mercury
	Non detectable	KS F 3230 : 2013	Chromium
TVOC Content	24.68 ug*m ³	ASTM D5116	
Recycled Content	99 %		Internal

Material Properties

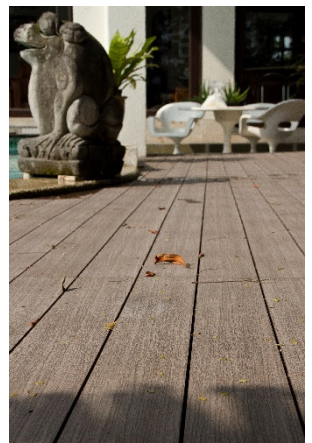
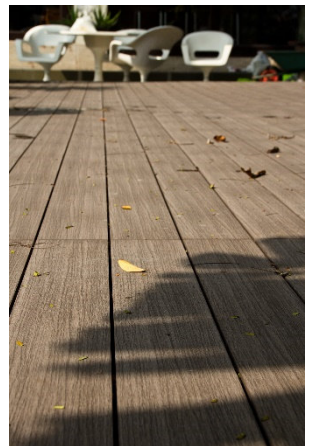
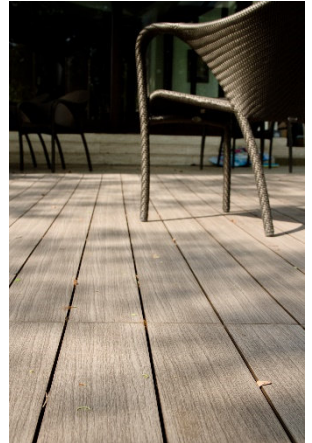
(PVC-WPC Deck Board Code : P 800, 801, 803 & 804)



*Detailed dimensions - 125 (W) X 25** (Thk.) X 3,050 (L) mm*

***The thickness subject to +/- 0.30 mm tolerances due to sanding process on it's surface.*

Property	Result	Test Method
Flexural Strength	40.9 MPa	ASTM D 6109 - 10
Flexural Modulus	4290 MPa	
Maximum Tensile Force	1617 N	ASTM D 638 - 10
Coefficient Of Linear Thermal Expansion	59.27 um/m°C	ASTM D 696 - 08
Flexural Stress	44.5 MPa	EN ISO 178 : 2010
Flexural Strain (Max flexural stress)	1.6%	
Linear Thermal Expansion (-30°C to 80°C)	Length direction 36.9 um/K	ISO 11359 - 2: 1999
	Width direction 45.1 um/K	
	Thickness direction 64.7 um/K	
Falling Mass Impact	not less than 10 J	EN 477 : 1999
Flexural property of Load Bearing products	Flexural Modulus 4426 Mpa	EN 789 : 2004
	Bending Strength 26.9 Mpa	
Heat Reversion	0.2%	EN 479 : 1999
Swelling	In thickness 0.29%	EN 317 : 1993
Water Absorption	0.28 %	ASTM D1037-06a
Vertical Burning	V0	UL94v
Anti-Slip, Coefficient Of Friction	1.07 (Static)	ASTM D2394 : 2005
	0.73 (Kinetic)	
Resistance to weathering	Delta E = 3.75, Grey scale = 3	EN ISO 4892 - 2 : 2013
Freeze -Thaw (Delaminate test, 20 days water immersion test in -10°C, 45°C repeat 10 test cycles)	No warping, No twisting, No deformation, No cracking, Delta E = 0.51, Grey scale = 4	EN 4628
Resistance to micro-fungi	Good	ISO 16869 : 2008
Moiture Resistance	Thickness change 0.1%	EN 321 : 2001
Bending Strength (initial)	32.6 Mpa	
Bending Strength (final)	30.2 Mpa	
Residual	92.6%	
Heat Build-up	Horizontal 47.8 °C	CEN 15534 -1 : 2007
	Vertical 39.2 °C	
Color Degradation	4 -5	NF EN ISO 4892 - 2
Gap Of Color	Good	NF EN ISO 105 - J03
Biological Agent Resistance	Good	NF EN ISO 105 - J03
Engine Oil Stain	Good	NF EN ISO 105 - J03
Brinell Hardness	4.66 HB	NF B51 -126
Stripe Resistance	4H Lengthwise	EN 15184 : 1998
	5H Crosswise	
Under Load Stiffness	Divided Load 0.2mm	NF EN 660 - 2
	Located Load 0.6mm	NF EN 660 - 2
Abrasion Resistance	Flat surface 69.7 mg	NF EN 660 - 2
	Reeded surface 41.5 mg	
Specific Gravity	1429 kg/m3	EN ISO 1183 -1 : 2004
Heat Deflection Temperature	67.4 °C	EN ISO 75 -1 (Method A)
Vicat Softening Point	82 °C	
Total Volatile organic compounds (TVOC) Emission Rate	0.15 mg per m3 per hour	ASTM D 5116- 06
Formaldehyde Emission Rate	<0.01 mg per m3 per hour	
Phenyl cyclohexene Emission Rate	No Detected	
Total Phthalate Emission Test	< 0.003 mg per m3	
Total Particles Emission Test	0.01 mg per m3	
Cadmium (Cd)	Not Detected	Inductively Coupled Plasma Atomic Emission Spectroscopy (ICP-AES)
Lead (PB)	Not Detected	
Arsenic (As)	Not Detected	
Mercury (Hg)	Not Detected	
Hexavalent Chromium (Cr 6+)	Not Detected	UV- Vis Spectrometer
Halogenated Solvents	Not Detected	Headspace- Gas Chromatography with Mass Selective Detector (GC- MSD)
Aromatic Solvents	Not Detected	
RoHS Directive 2011/65/EU	Not Detected	2002/95/EC
Made from 50% Recycled Content	Passed	Green Certificate



Material Properties

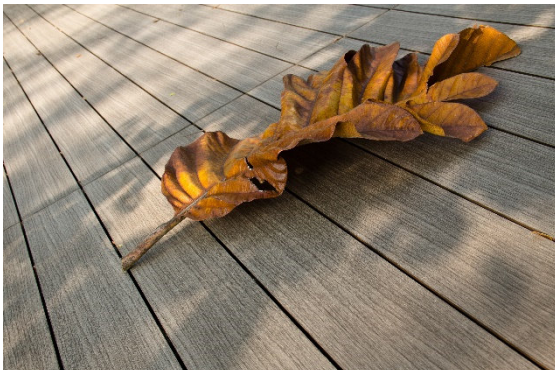
(PE-WPC Deck Board Code : PE 806-2, PE806-G)



Detailed dimensions - 125 (W) X 25** (Thk.) X 3,050 (L) mm

**The thickness subject to +/- 0.30 mm tolerances due to sanding process on it's surface.

Property	Result	Test Method
Flexural Modulus	2440 Mpa	ASTM D 6109 - 10
Tensile Strength	14 Mpa	ASTM D 638 - 10
Abrasion Resistance	105 mg	ASTM D 4060 - 10
Water Absorption	0.28%	ASTM D1037-06a
Coefficient Of Linear Thermal Expansion	167.9 um/m/°C	ASTM E831 : 2006
Specific Gravity	1.35 g/cm3	ASTM D 1505
Heat Deflection Temperature	45 °C	ASTM D648
Vicat Softening Point	120 °C	ASTM D1525
Total Volatile organic compounds (TVOC) Emission Rate	0.15 mg per m3 per hour	ASTM D 5116- 06
Formaldehyde Emission Rate	<0.01 mg per m3 per hour	
Phenyl cyclohexene Emission Rate	No Detected	
Total Phthalate Emission Test	< 0.003 mg per m3	
Total Particles Emission Test	0.01 mg per m3	
Cadmium (Cd)	Not Detected	Inductively Coupled Plasma Atomic Emission Spectroscopy (ICP-AES)
Lead (PB)	Not Detected	
Arsenic (As)	Not Detected	
Mercury (Hg)	Not Detected	
Hexavalent Chromium (Cr 6+)	Not Detected	UV- Vis Spectrometer
Halogenated Solvents	Not Detected	Headspace- Gas Chromatography with Mass Selective Detector (GC- MSD)
Aromatic Solvents	Not Detected	
RoHS Directive 2011/65/EU	Not Detected	2002/95/EC
Made from 50% Recycled Content	Passed	



Material Properties

(PE-WPC Deck Board Code : PESO 902, PE 903)



Detailed dimensions - 140 (W) X 24** (Thk.) X 2,800 (L) mm

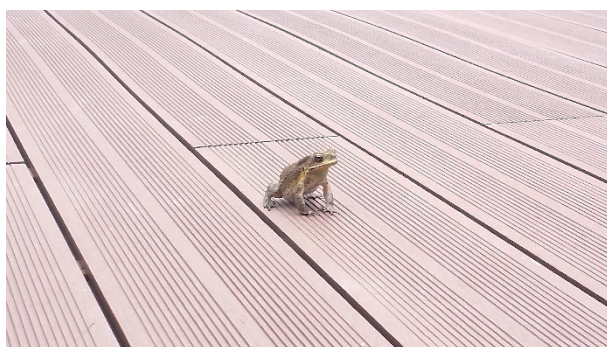
**The thickness subject to +/- 0.30 mm tolerances due to sanding process on it's surface.



Detailed dimensions - 150 (W) X 25** (Thk.) X 2,800 (L) mm

**The thickness subject to +/- 0.30 mm tolerances due to sanding process on it's surface.

Property	Result	Test Method
Specific Gravity	1.32 g/cm ³	ASTM D792-13 METHOD B
Flexural Test (Strength)	31.8 MPa	ASTM D 790-10 (PROCEDURE A)
Flexural Test (Modulus)	4660 MPa	ASTM D 790-10 (PROCEDURE A)
Izod Unnotched Impact Strength	50 J/m C (complete break)	ASTM D4812-11
Shore Hardness	D/74/1	ASTM D2240-05 (2010)
Tensile Strength	19.4 MPa	ASTM D638-10
Water Absorption	1.54%	ASTM D570-98 (2010)



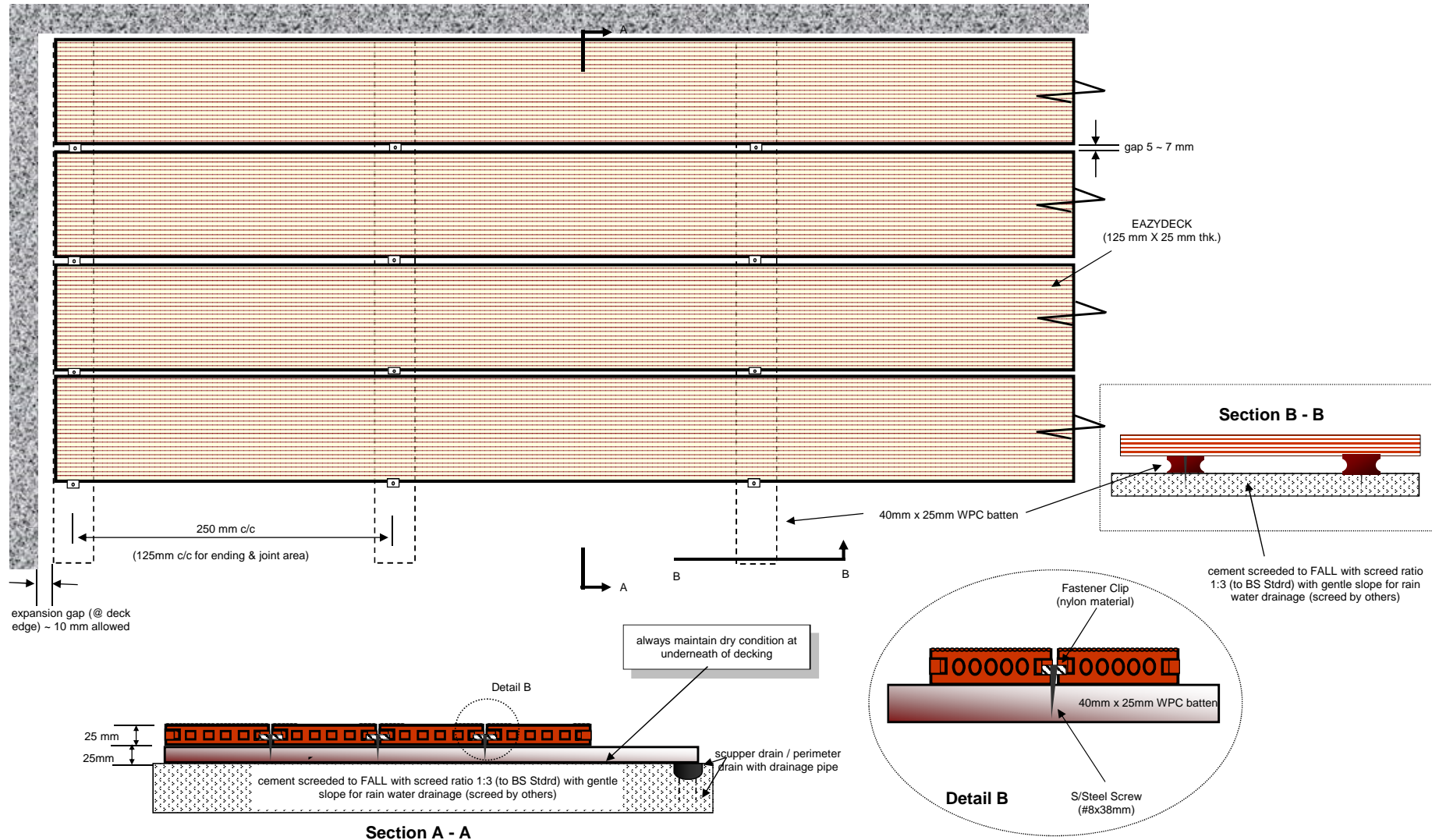
Typical Installation Detail (with WPC batten 4025)

Specification descriptions

"To supply & Install EAZY DECK SYSTEM comprise of 125/138/140/150 mm x 24/25 mm X 3,050/2,800 mm PE-WPC or PVC-WPC deck board (Product Code) , SS 304 screws fixed with nylon fastener clip onto solid PE-WPC battens (25x40mm) running @ 250 mm c/c only; all on accordance with manufacturer's instruction & recommendation"



www.easywood.com.my



* Above illustration only serve as a brief understanding on the installation concept, not for construction purposes. More details i.e. edge finishes, type of coating (on the deck board, if any), e.t.c. to be finalised, as according to clients' requirements & site condition.

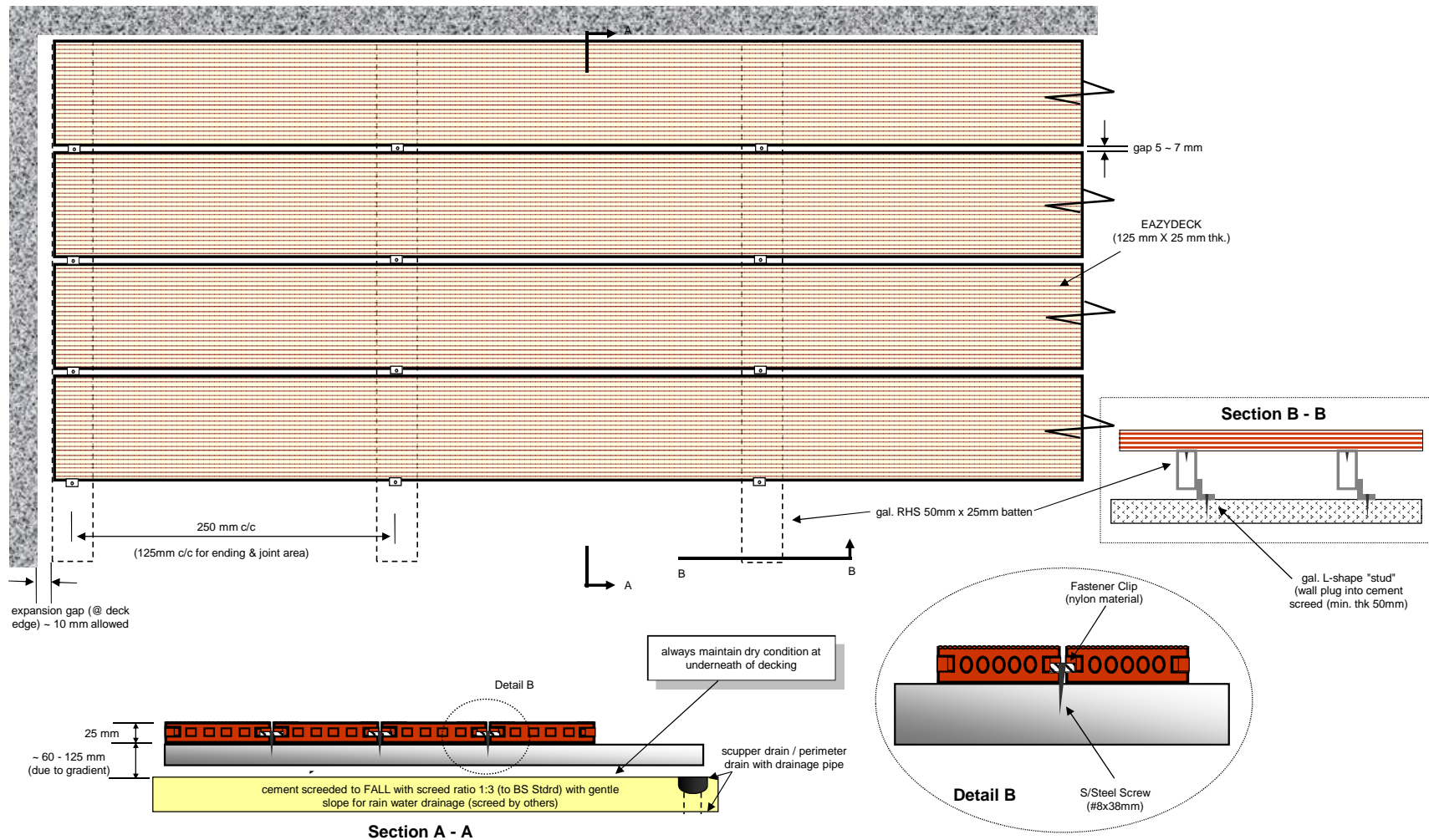
BY EAZYWood

Typical Installation Detail (with gal RHS 25 mm x 50 mm batten)



Specification descriptions

"To supply & Install EAZY DECK SYSTEM comprise of 125/138/140/150 mm x 24/25 mm X 3,050/2,800 mm PE-WPC or PVC-WPC deck board (Product Code) , SS 304 screws fixed with nylon fastener clip onto galvanized RHS (25 mmx 50 mm) battens running @ 250 mm c/c only; all on accordance with manufacturer's instruction & recommendation"



* Above illustration only serve as a brief understanding on the installation concept, not for construction purposes. More details i.e. edge finishes, type of coating (on the deck board, if any), e.t.c. to be finalised, as according to clients' requirements & site condition.

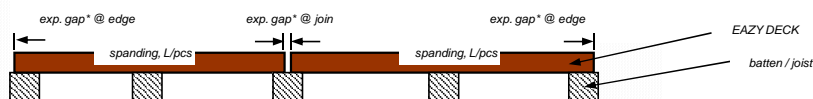
BY EAZYWood

Important Notes related to EAZY Deck installation works

Wood plastic composite (WPC) material generally having it's unique characteristics and features, where generally vary from natural timber. It is very important to understand it and to install the products with the most appropriate specifications.

1. Thermal expansion

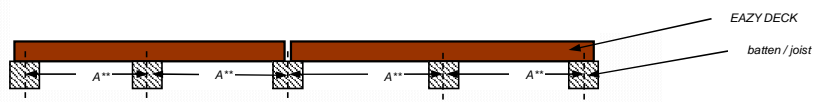
- WPC material will subject to thermal expansion when exposed to high moisture and temperature, therefore **expansion gap must be allowed** at all joint & end point as illustrated below,



exp. gap - the size of gap depends on the spanning length (L)/pcs involved.
i.e. for spanning decking length of 3 m/pcs, min. 10 mm for each end must be provided.*

2. Distance of batten or joist support to EAZY DECK

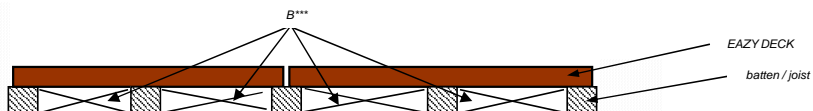
- WPC material is having higher tensile ability in general or compared to natural timber. Therefore, sufficient nos. of supports underneath the deck is a must.



*A** - the batten or joist shall distanced not more than 250 mm c/c, 125 mm c/c for ending or joint area.*

3. Void or ventilated condition to be provided

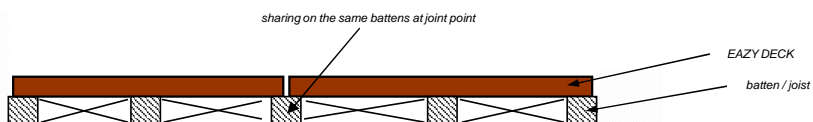
- EAZY DECK shall not installed or laid directly on the floor, without batten or joist supports.



*B*** - ventilation or void condition shall be provided. Ensure no permanent water ponding underneath the decking. EAZY DECK shall not installed or laid directly on the floor, without batten or joist supports.*

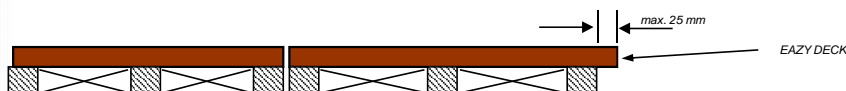
4. Sharing a single batten / joist at deck-joint area

- at the joint point between 2 pcs. of EAZY Deck boards, sharing on one single batten / joist



5. Cantilever not longer than 1"

- If EAZY DECK at the end/edge of it in "cantilever" or "over-hang" condition, the length shall not more than 25 mm.



6. EAZY DECK is not fungus, mold and algae proof product. The fungus, mold or algae may or may not grow on the deck boards, subject to the moisture content & dampness situation at where the deck is built.

7. Create opening using EAZY DECK. The deck boards must be fixed on a "rigid and strong" support framing, i.e. metal material which the members are welded into a framing design, with allow the deck boards to be fastened 250 mm c/c.

8. Cement screeded to FALL, before battens installation. The cement screed thickness must be min. 50 mm thk. , with the ratio @ 1 : 3 (comply to BS Standard).

Remarks ; all specifications suggested are based on use under normal condition only, kindly counter check with the supplier / manufacturer for use under special condition

EAZY Wood Ceiling Strip & Wall Panelling

EAZY Wood's Ceiling Strip & Wall Panels, with features and benefits like termite & water resistance, easy installation and maintenance, pre-finished surface with natural wood grain, are your ideal product for all your ceiling or wall applications both indoor and outdoor.



EAZY Wood 4" T&G Ceiling Strips / Wall Panelling



"EAZY-CEIL 8121" 8 thk. x 121 x 3,050 mm
(T&G with ~4mm groove width)



"EAZY-CEIL 12121" 12 thk. x 121 x 3,050 mm
(T&G with ~7mm width groove)

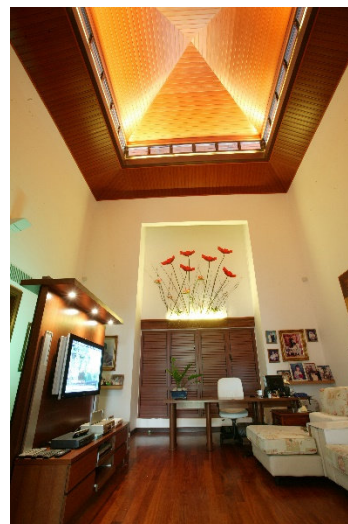
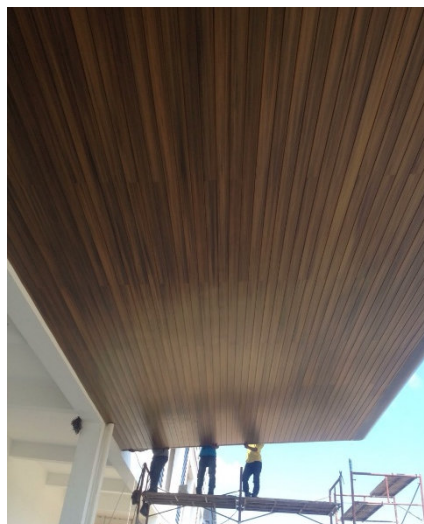


"EAZY-CEIL 12123" 12 thk. x 123 x 3,050 mm
(T&G butt groove)

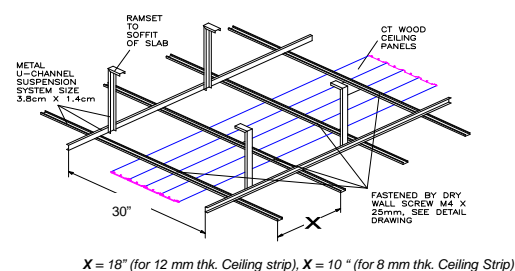
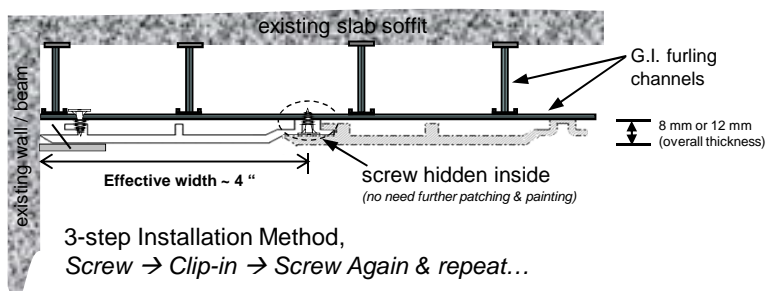
Skirting, border & L angle
(matching colour to ceiling strip / wall panelling)



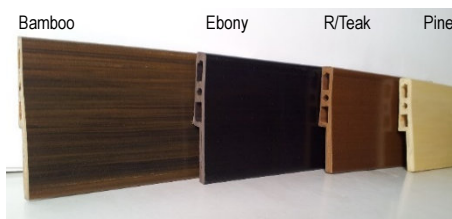
"Skirting 1870" 18 thk. x 70 x 2440 mm
"Border 1230" 12 thk. x 30 x 3810 mm
"L-Angle 12325" 3.0 thk. x 25 x 3810 mm
"Border 0325" 3 thk. x 25 x 3810 mm



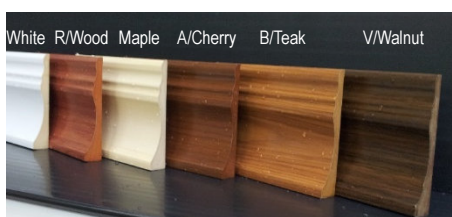
Unique T&G design makes installation
simpler, easier & faster
(similar to fibrous plaster / gypsum ceiling installation method)



EAZY Wood Skirting Board 1870 (18thk. X 70 H x 2440 L) mm



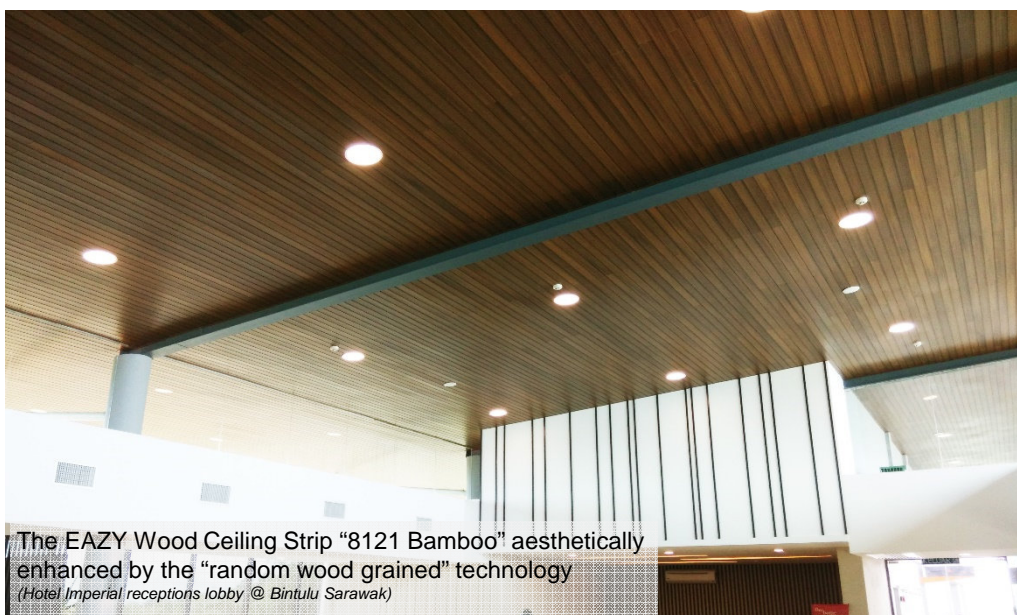
EAZY Wood Skirting Board 1690 (16thk. X 90 H x 2440 L) mm



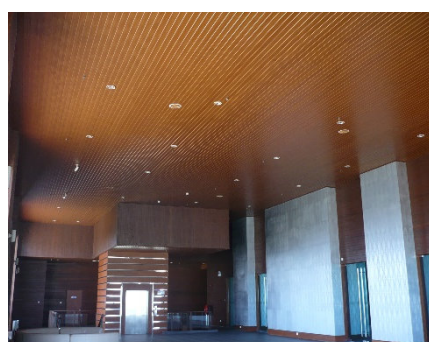
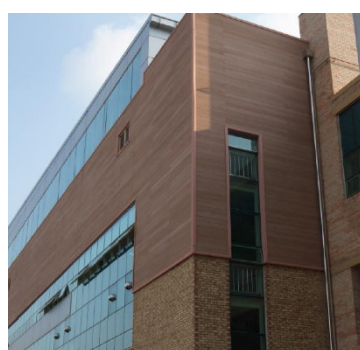
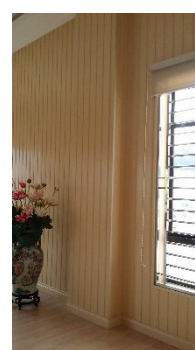
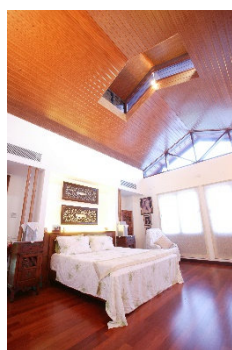
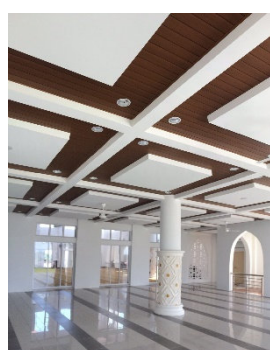
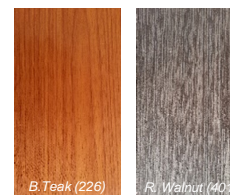
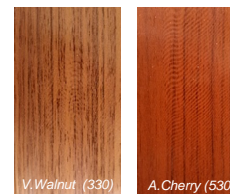
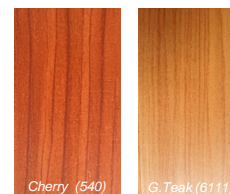
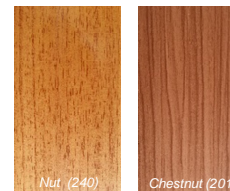
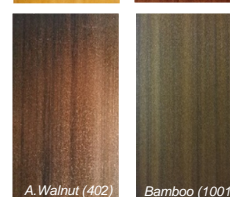
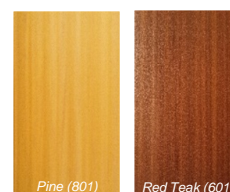
EAZY Wood Ceiling Strip & Wall Panelling

Enjoy the homogenies wood looking finishes but skip the hazard of insects / termite attack, with almost no maintenance required along its life span!

Best recommended for roof eave / over hand ceiling, interior decoration, external wall covering and all others ceiling and wall applications.



Widest range of ceiling strips
(with matching colour border available)





TM

www.easywood.com.my

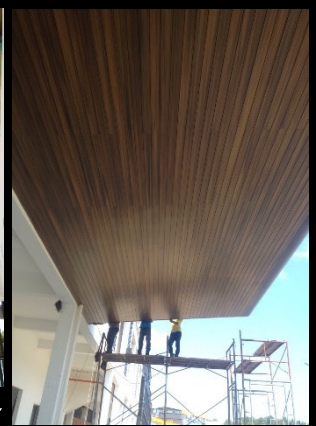
Our achievements since year 2004 (ceiling strips & wall panelling)



external wall cladding @ Qatar



lobby receptions area @ Imperial Hotel , Bintulu, Sarawak



63-unit bungalows project @
East Ledang, Nusajaya, J.Bahru.



Setia Eco-park @ Meru, Klang.



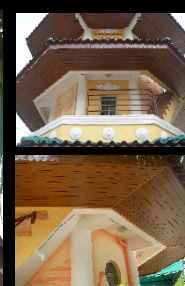
Taman 1 Malaysia @ Shah Alam



Teluk Warisan Resort,
Pulau Duyong
Kuala Terengganu.



Open University, K.Lumpur.



Sri Lanka Buddhist Temple @ Jln. Sentul, KL



天后古庙@Old Klang Road.



Tropicana Medical Centre, Kota Damansara

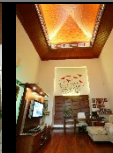


surau @ Precinct 14, Putrajaya, Selangor.



Masjid Seremban Jaya @ Seremban.

Private residential
bungalow @
Sunway Damansara,
Selangor.





www.easywood.com.my

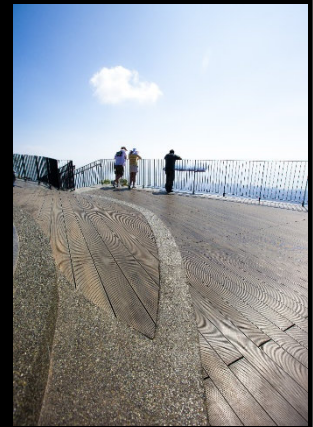
Our achievements since year 2004 (composite decking)



Shangri-la Rasa Sayang Resort & Spa @ Penang.



viewing deck @ Penang Hill, Penang.



Soul Out Bistro @ Bangsar, K. Lumpur.

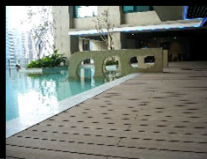


All Season Palace Condominium @ Penang.

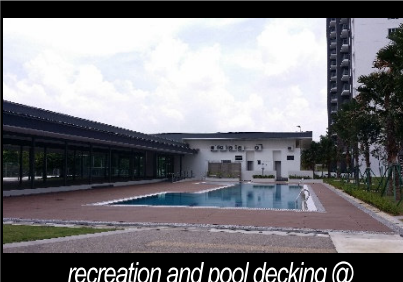


roof top pool deck (condominium) @ Penang.

G-TOWER
(Gold-Class
Green Building)
Jln. Tun Razak, K.L.



food & beverage out-lets @ Mid-Valley City



recreation and pool decking @
Nusa Idaman Condo, Nusajaya, J. Bahru.



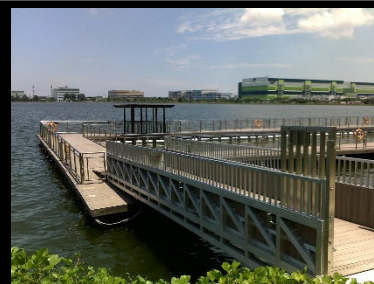
show gallery & recreation park @ Desa Park City



cafeteria extention @ Sunway University



viewing deck @ Shng Villa, Kuala Lumpur.



floating pontoon @ Pandan Reservoir, Spore

Perdana Quay
broad-walk
@ Langkawi

